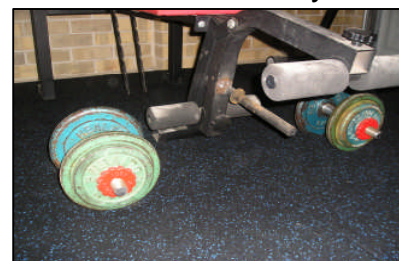
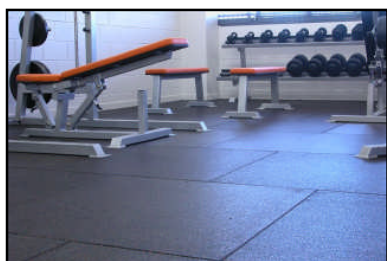




## Gym Tiles – Recycled Rubber For Gym Surfaces

### Gym Tiles fore Commercial or Home Use

Gym tiles are a long term, impact attenuating flooring system which is popular for use in all Gymnasiums. Gym tiles are a rubber floor tile which does not require adhesion to the sub-base due to the heavy individual weight of each tile. Once securely locked in around the perimeter Gym Tiles perform like a large rubber mat. Tiles can be easily replaced by the owner or removed with ease and re-installed at a different location if/when necessary.



### Gym Tile Features

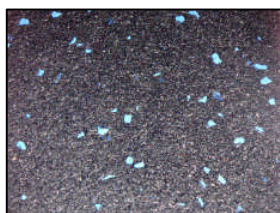
**FEATURES** Made from Recycled Rubber shredding & coloured EPDM granules (optional) Monolithic in construction with no veneers. Excellent slip resistance even when wet, Resilience for long term flooring solutions Custom colour combinations to match any interior. Light perfumed scent added to mask the initial rubber smell easy, low cost installations and replacement tiles available. Excellent cushioned underfoot comfort. Stain resistant and easily maintained. The tiles can be used in two ways the first is lay them without adhesive with a bevelled top edge or with adhesive and no surface bevel for a seamless look. Because of the unique manufacturing process the Australian made Gym Tile **will not shrink or curl**, unlike many imported and inferior products.



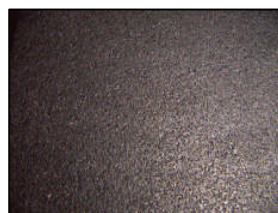
Black with 6% Cork Speckle



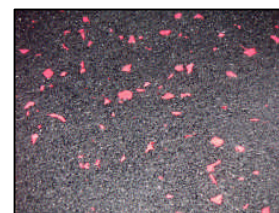
Black with 6% Yellow/Blue Speckle (Custom Colour)



Black with 6% Blue Speckle



Black with No Speckle



Black with 6% Red Speckle

**Dimensions:** 1 metre x 1 metre. Thickness - 15mm.

Gym tiles have under gone stringent testing and the Australian Wool Testing Authority test report shows a positive result of 3.1 kw/m<sup>2</sup> Critical Heat Flux (CRF). This result enables our Gym Tiles to be used in all buildings other than accommodation for the aged and patient care areas.

Subject to fair wear and tear this product has an anticipated service life of 7 years when used and maintained in accordance with the manufacturers care and maintenance manual.

**For further details please contact**

[info@repeatrubber.com.au](mailto:info@repeatrubber.com.au)

**or phone on 03 9776 8818 [www.repeatrubber.com.au](http://www.repeatrubber.com.au)**